

WORLD CLASS END OF LIFE TAMWORTH

REVIEW OF
ENVIRONMENTAL FACTORS

Architectus acknowledges Aboriginal and Torres Strait Islander Peoples as Traditional Custodians of the lands on which we live and work. We honour their unique cultural and spiritual relationships to the land, water, sky, and communities and their rich contribution to society.

Contents

1	Site Analysis	4
	Site Context	5
2	Landscape Design Principles	6
	Landscape Design Principles	7
	Vision	8
3	Concept Design	9
	Concept Plan	10
	Concept Design - Place Framework	11
	Concept Plan - Entryway & Patio Space	12
	Section	13
	Concept Plan - Patio & BBQ Space	14
	Section	15
	Concept Plan - Patio & Courtyard Space	16
	Section	17
	Indicative 3D Views	18
4	Planting Design	19
	Planting Palette	20-21
	Proposed Location Of Additional Trees	22
5	Landscape Design Statement	23
	Landscape Design Statement	24

SITE ANALYSIS

1

Site Analysis

Site Context



Located within the heart of Tamworth, NSW serves as a vital healthcare facility for the region. This hospital is positioned to cater to a diverse population. It benefits from easy access to major transport routes which facilitate patient arrivals and emergency services.

The exterior site context features a variety of landscape such as open woodlands, grasslands and diverse vegetations that enhances the overall landscape. Native species such as Eucalyptus and Accacia contribute to the biodiversity of the area.

Other neighbouring vegetation include open forests, wetlands and riparian vegetation.

The geologic nature is characterised by its sedimentary rock formations, coal deposits and alluvial soils. Alluvial soils are found along the banks of waterways which are typically fertile.

The average yearly rainfall ranges from 600mm to 700mm. Rainfall has a slight peak over summer and generally distributed throughout the year.

It is noted in the recommendations outlined in the 'Bushfire Threat Assessment for Proposed 1st Floor Extension On Existing Building(WCEoLP) At Tamworth Hospital' by Firebird ecoSultants Pty Ltd, dated 2 May 2025, indicate that the landscape requirements for bushfire protection are not applicable due to the significant hazard separation distance. The development is not within a mapped bushfire prone area of 140m. As a result, the landscaping within the courtyards is classified as BAL-low.

LANDSCAPE DESIGN PRINCIPLES

2

Landscape Design Principles



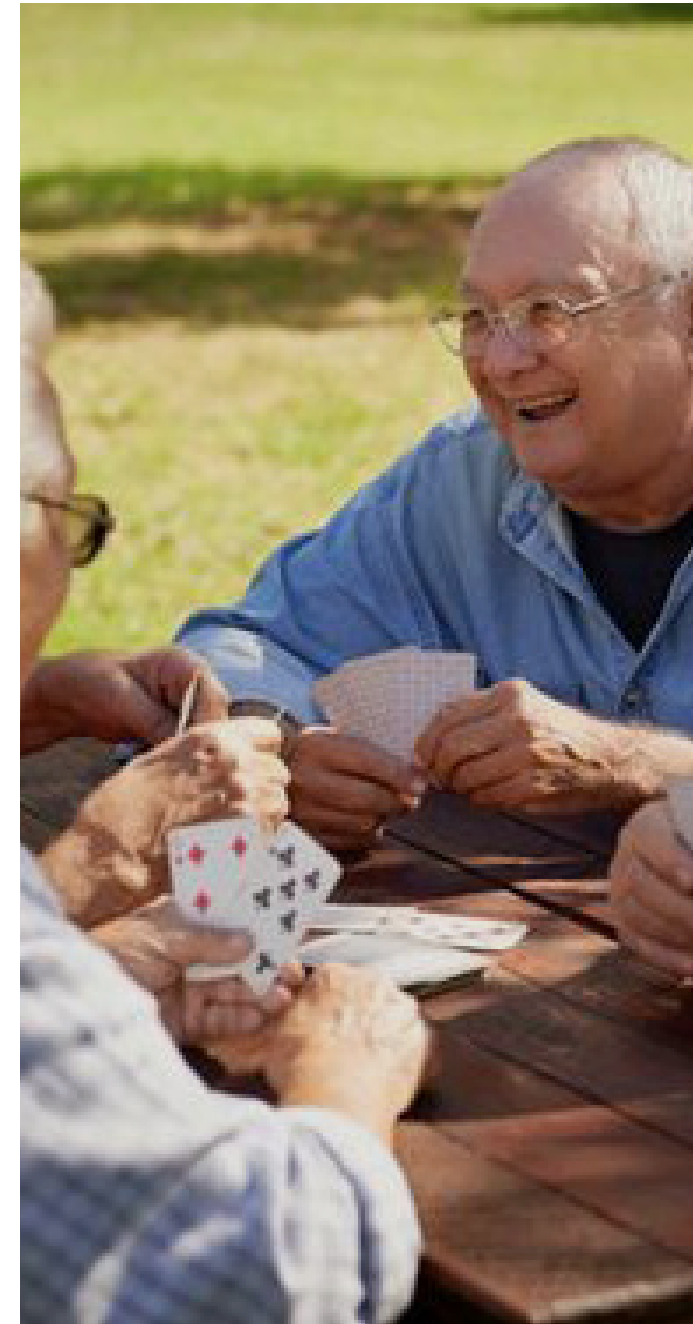
Design for Wellbeing

The presence of gardens and greenery, and access to fresh air, sunlight and natural light all contribute to benefits including reduced recovery times, the lifting of mood and lowering of anxiety.



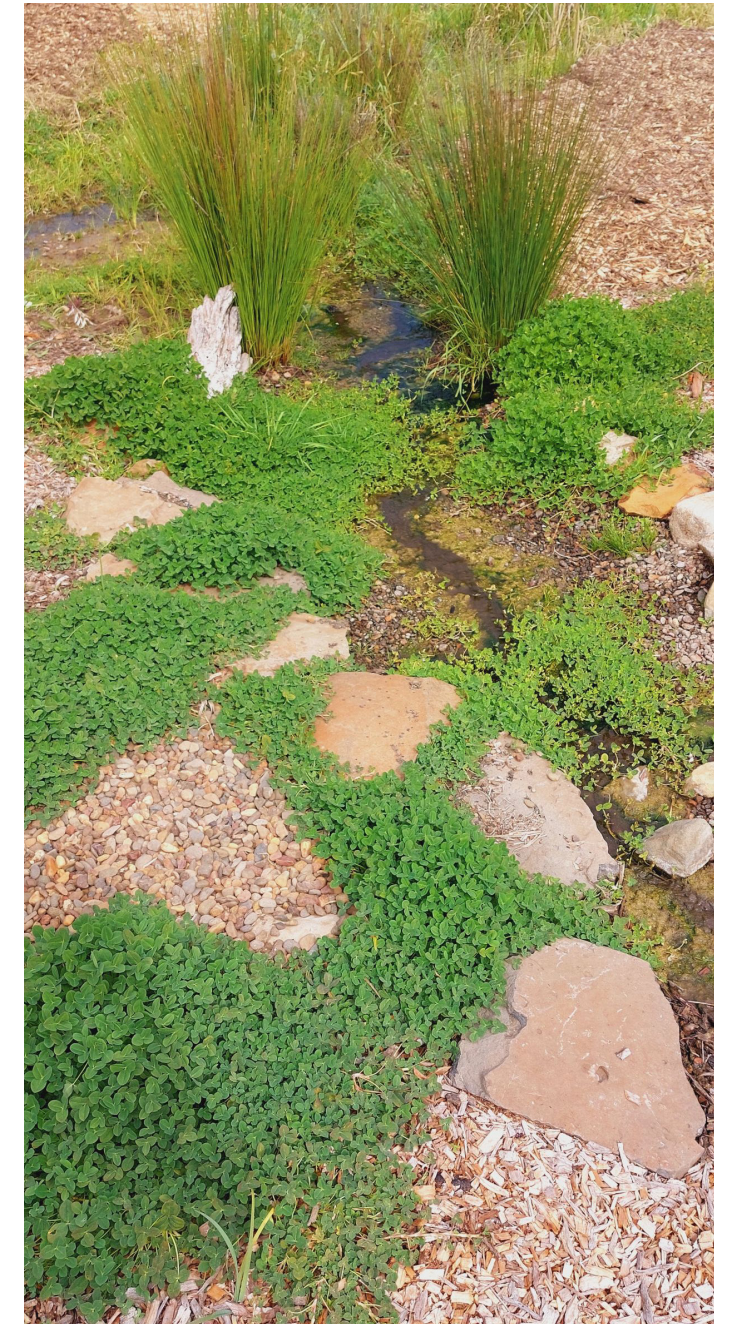
Design for Delivery of Care

The environment must accommodate flows of patients and visitors who are present for a broad range of reasons. The design should support visitors and family who are also increasingly involved in the provision of care.



Design for Connection

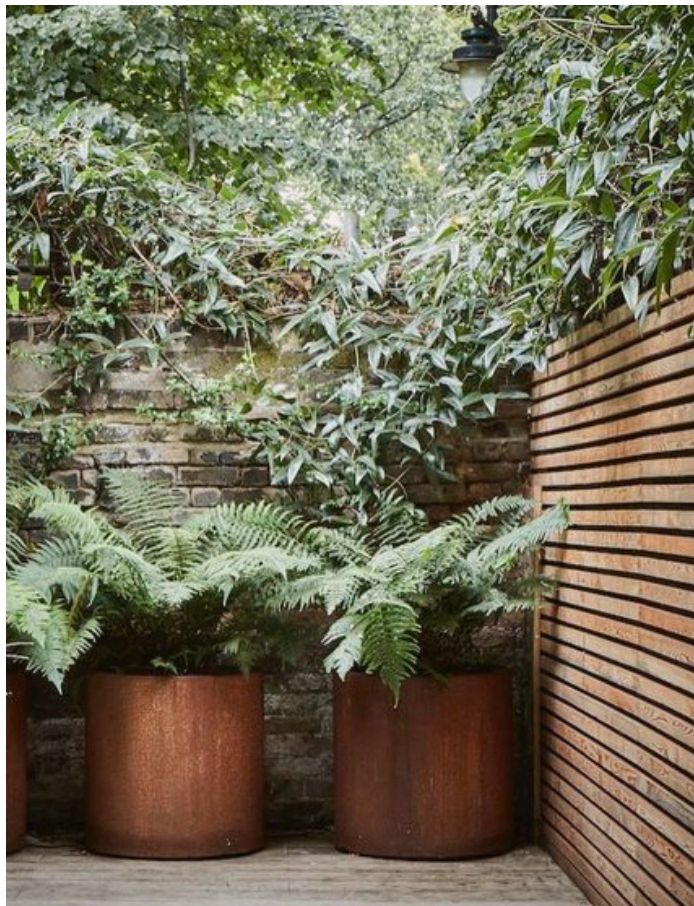
Privacy and the opportunity for respite are essential to patients and staff. It is also important for patients to feel connected to the life of the health facility and the world beyond – to have interaction as needed and not feel isolated.



Local Connection & Connection With Country

Creating spaces that reflects and respects first nations, honours local culture and fosters a sense of belonging.

Vision & Character

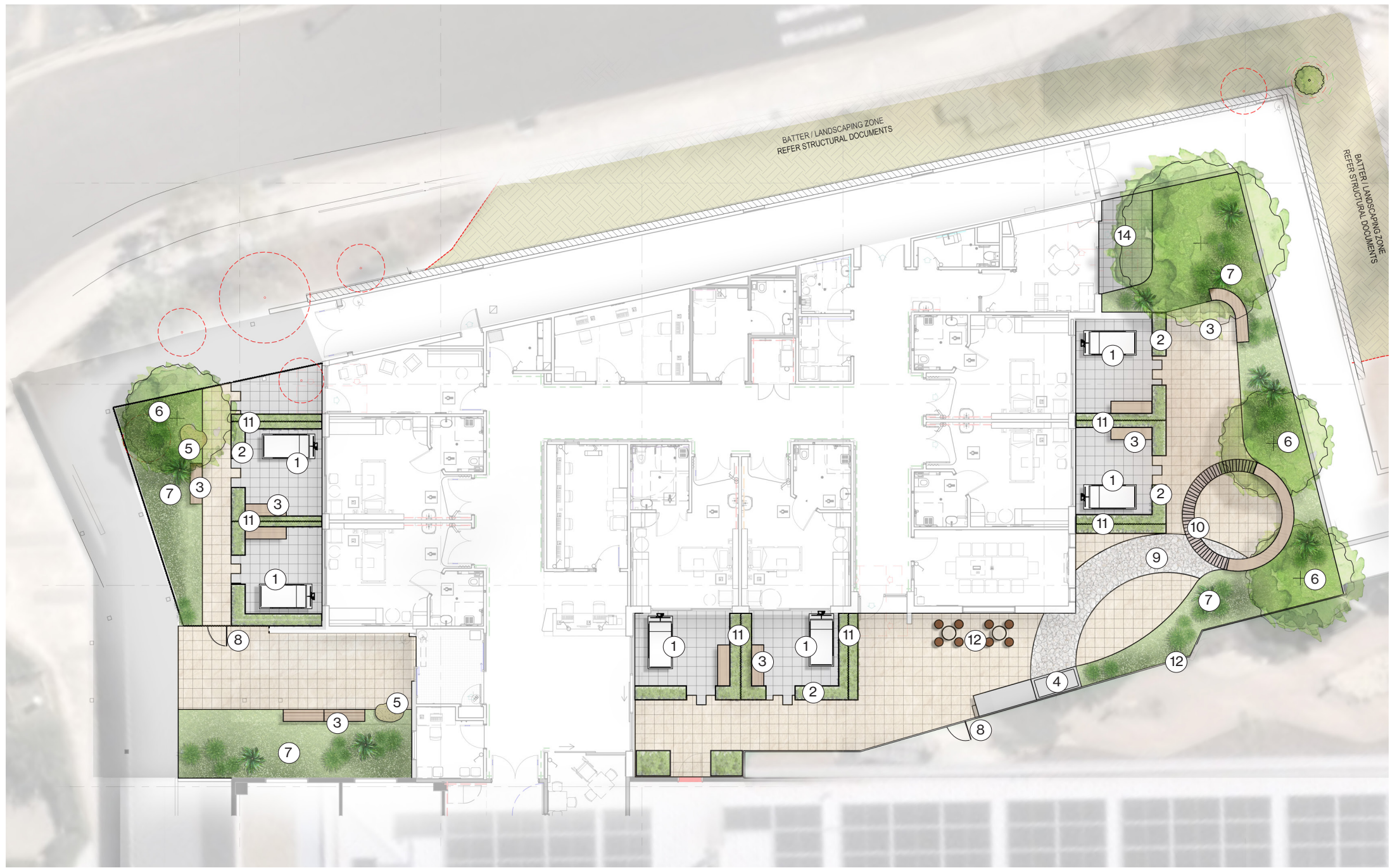


CONCEPT DESIGN

3

Concept Design

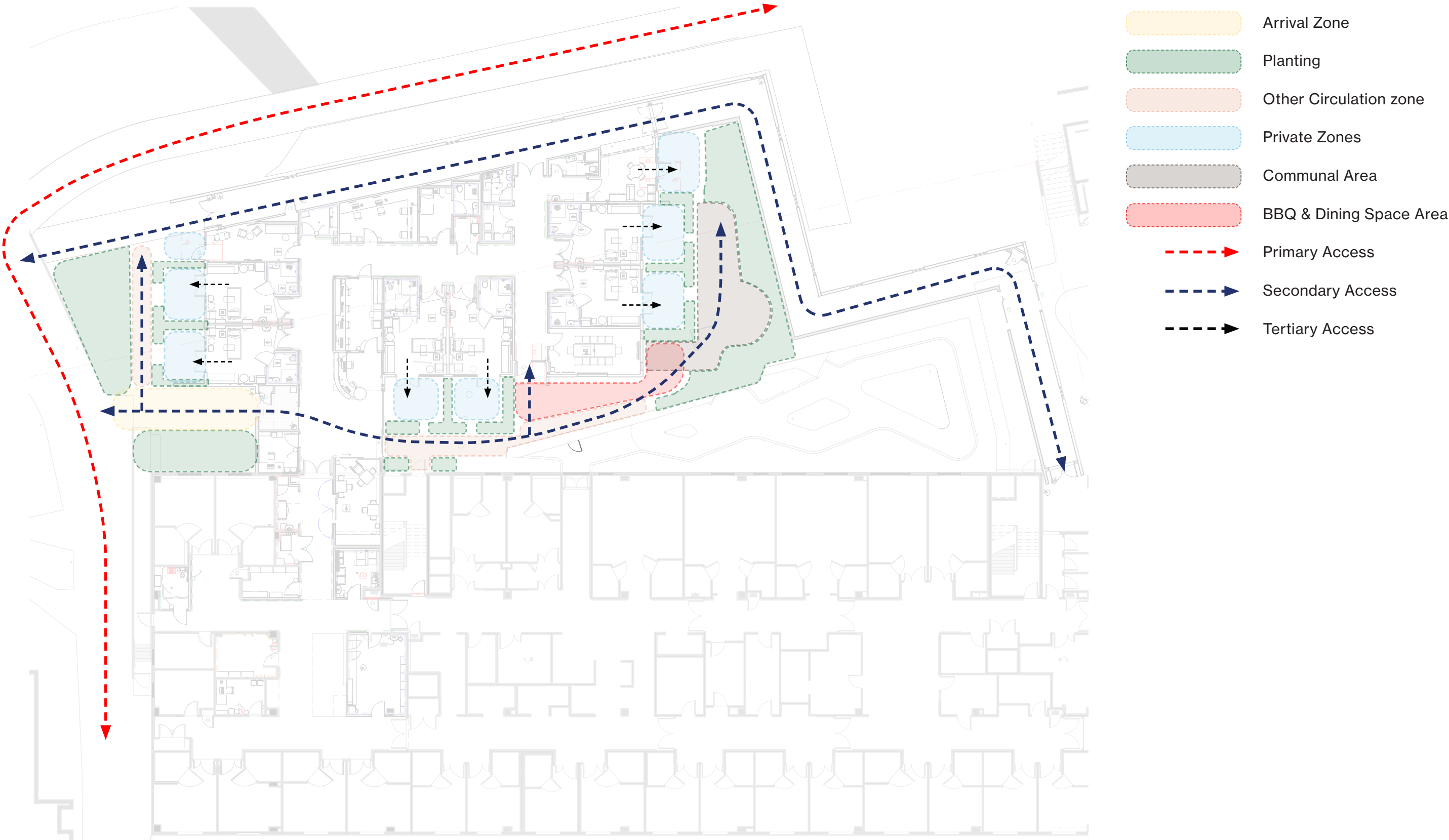
Concept Plan



- ① Patio with 3.2m width for beds
 - ② Galvanized steel planter box
 - ③ Fixed Furniture
 - ④ Built in BBQ
 - ⑤ Stone Seat
 - ⑥ Proposed Tree
 - ⑦ Planting Area
 - ⑧ Gate
 - ⑨ Crazy paving
 - ⑩ Paving in circular path
 - ⑪ Timber look aluminium battens
 - ⑫ Timber look aluminium fence
 - ⑬ Outdoor dining space
 - ⑭ Staff area
- ① Trees to be removed.
- Note: 12 trees in total (including trees inside building footprint) to be removed.

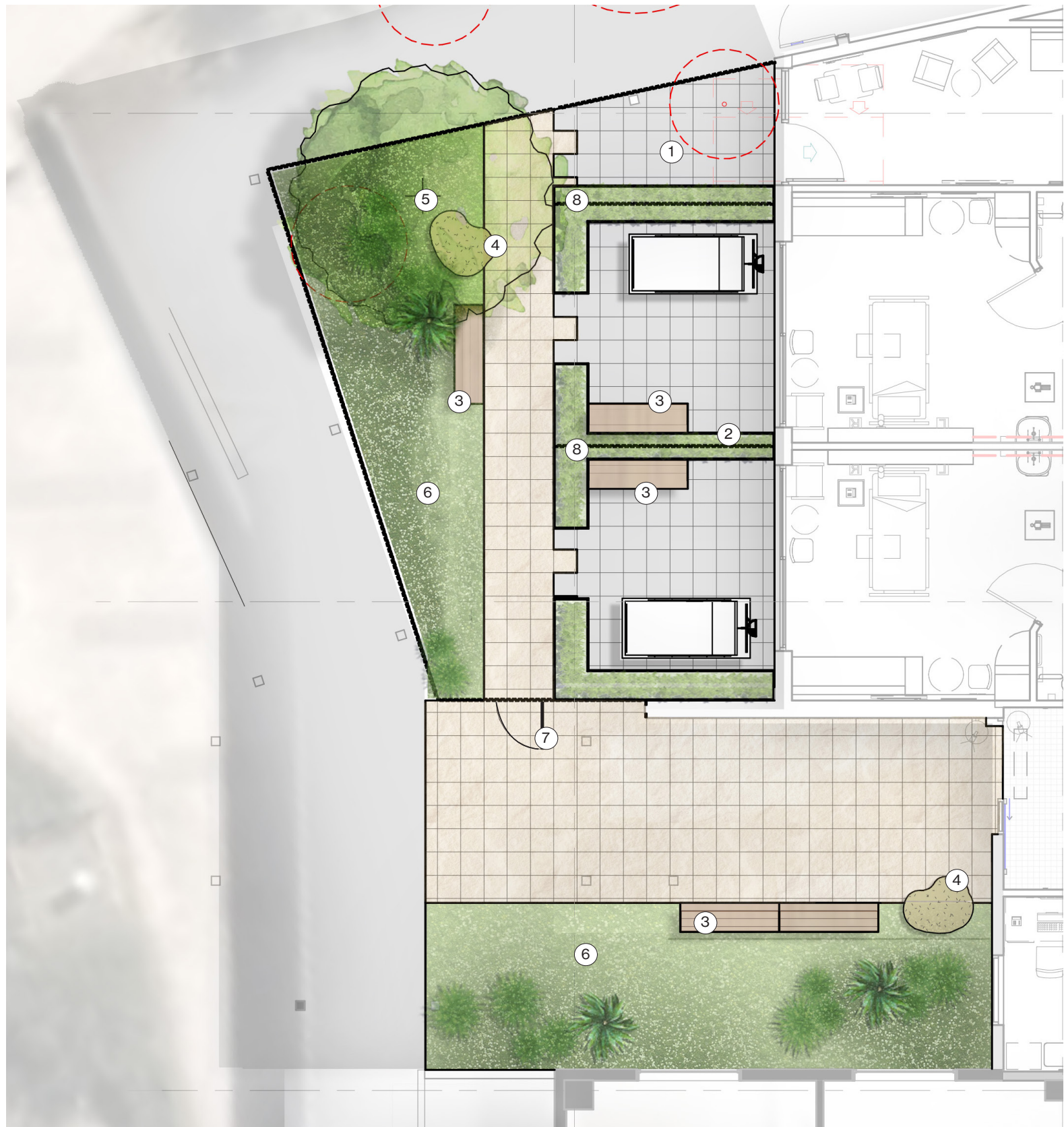
Concept Design

Place Framework



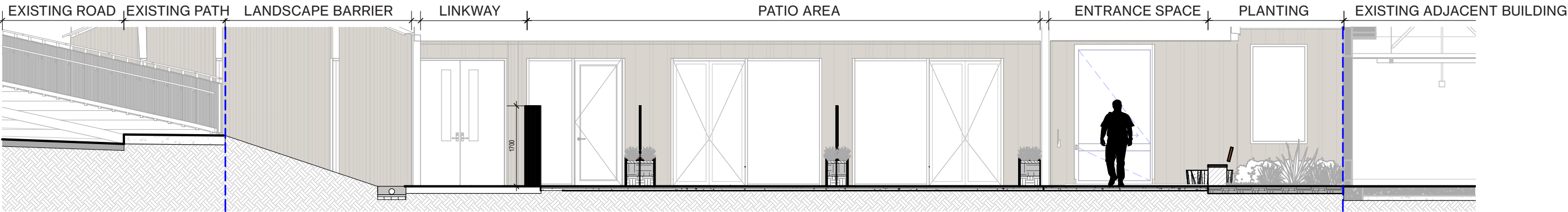
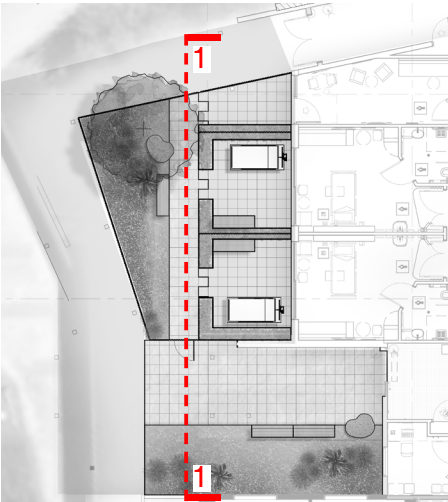
Concept Design

Concept Plan - Entryway & Patio Space



- ① Patio with 3.2m width for beds
 - ② Galvanized steel planter box
 - ③ Fixed Furniture
 - ④ Stone Seat
 - ⑤ Proposed Tree
 - ⑥ Planting Area
 - ⑦ Gate
 - ⑧ Timber look aluminium battens
- Trees to be removed

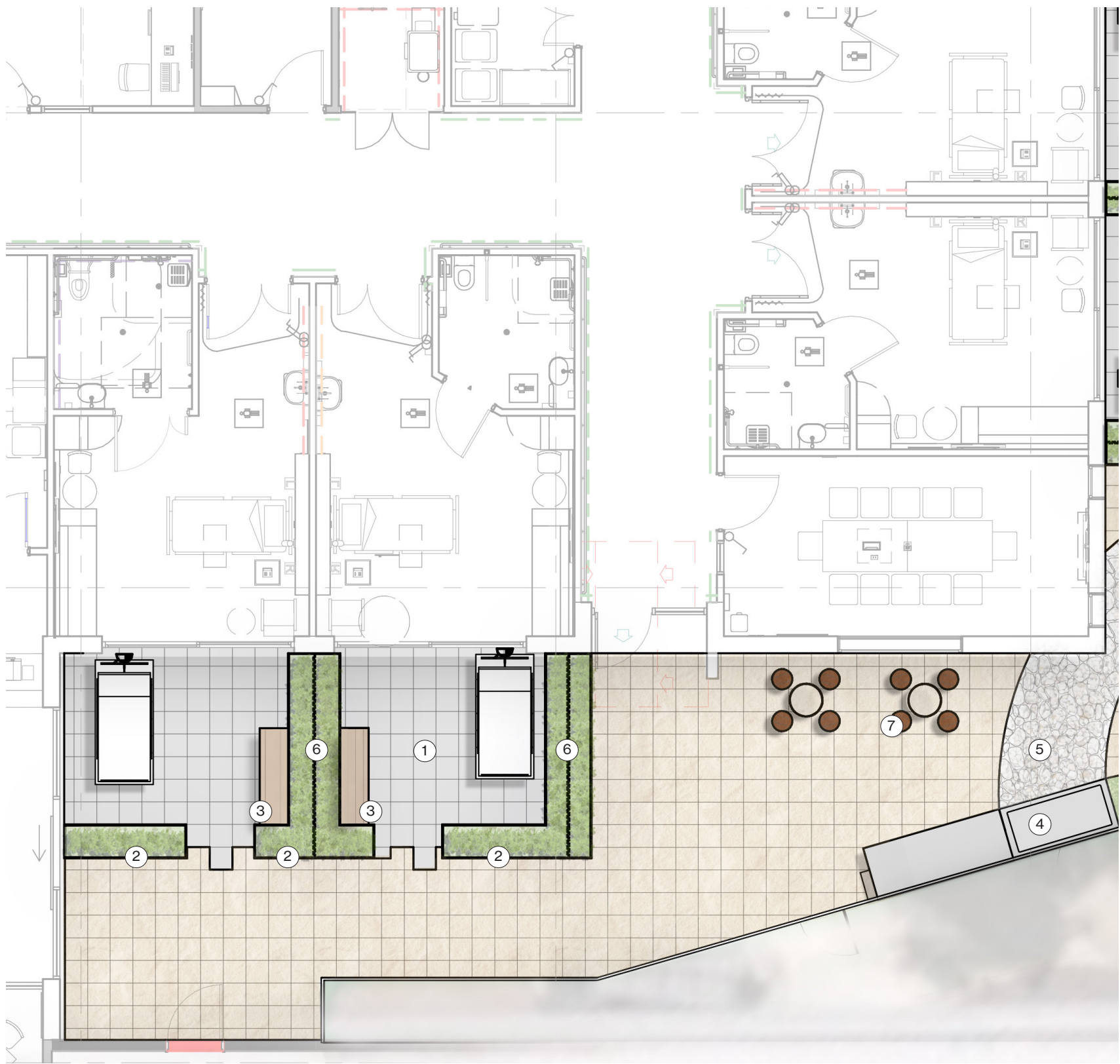
Concept Design
Section



1

Concept Design

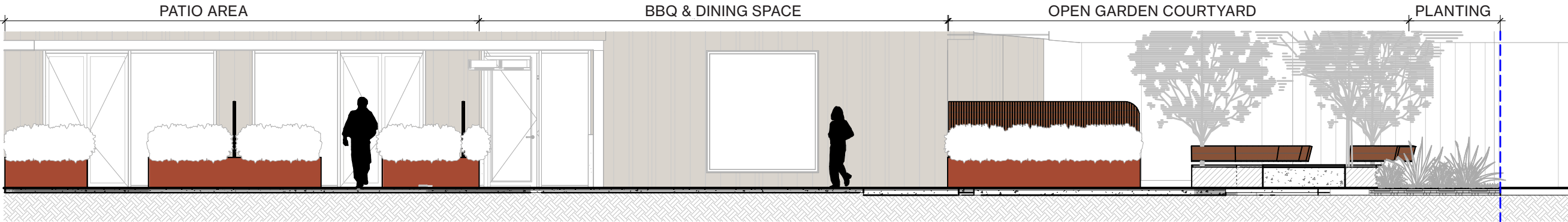
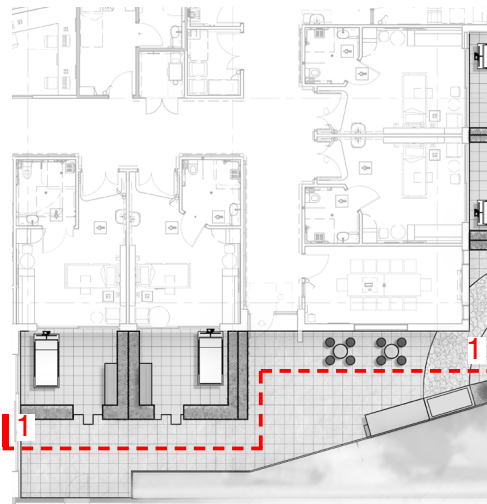
Concept Plan - Patio & BBQ Space



- ① Patio with 3.2m width for beds
- ② Galvanized steel planter box
- ③ Fixed furniture
- ④ BBQ
- ⑤ Crazy paving
- ⑥ Timber look aluminium battens
- ⑦ BBQ & Dining space

Concept Design

Section



1

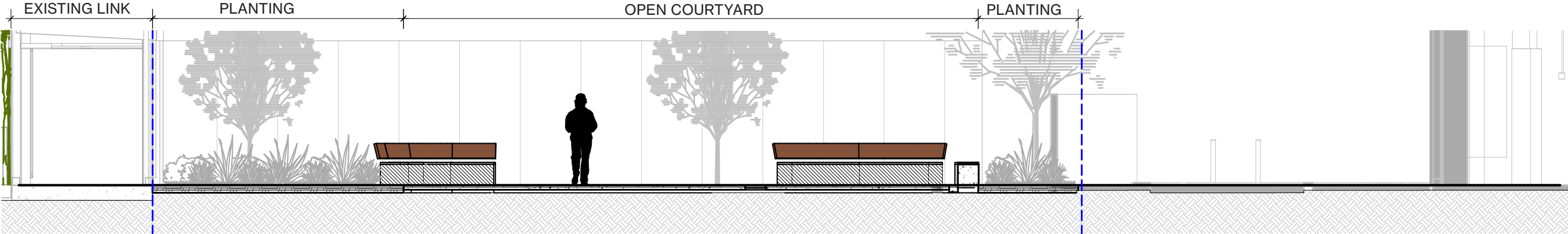
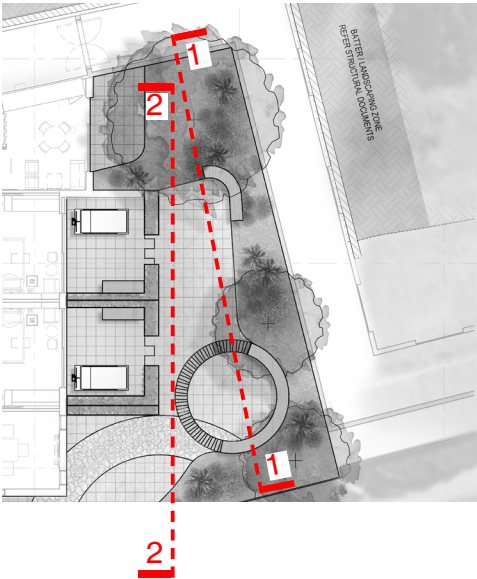
Concept Design

Concept Plan - Patio & Courtyard Space

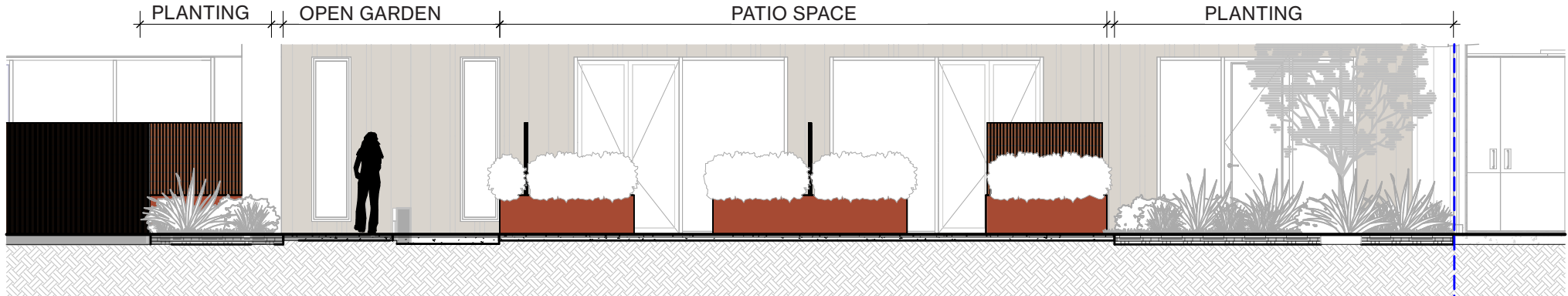


- ① Patio with 3.2m width for beds
 - ② Galvanized steel planter box
 - ③ Fixed furniture
 - ④ Planting
 - ⑤ Crazy paving
 - ⑥ Timber look aluminium battens
 - ⑦ Proposed tree
 - ⑧ Paving in circular path
 - ⑨ Staff area
- Trees to be removed

Concept Design
Section



1

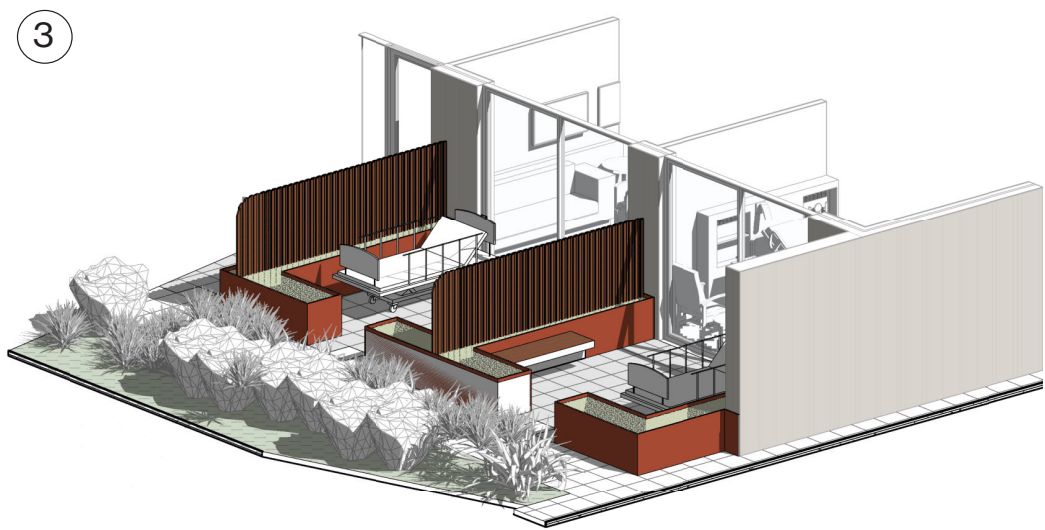
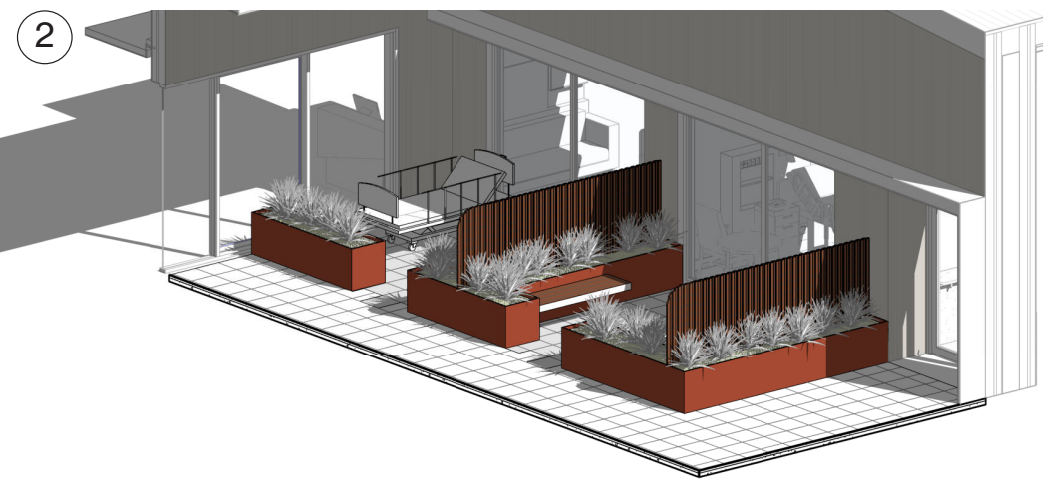
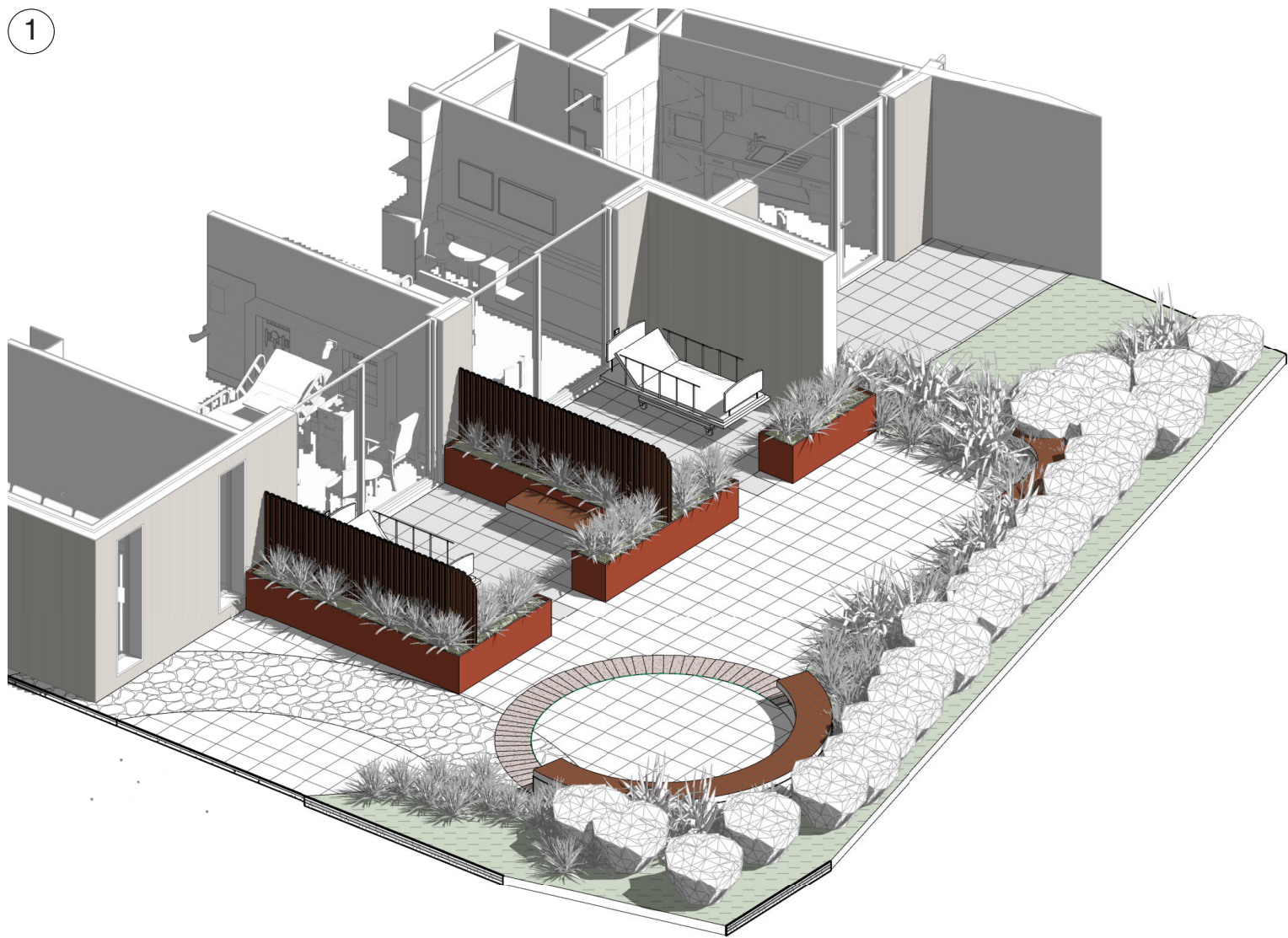
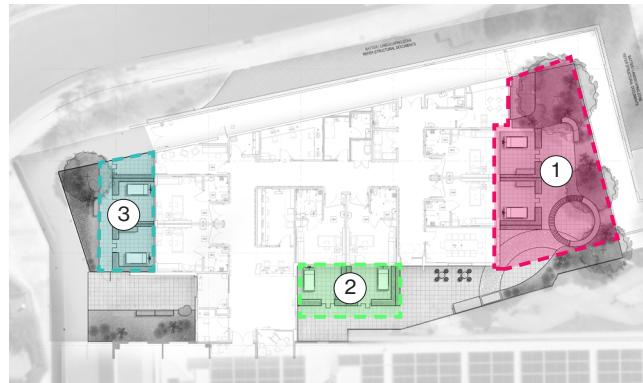


2

Concept Design

Indicative 3D Views

Key Plan



PLANTING DESIGN

4

Planting

Planting Palette

PLANTING SCHEDULE - TREES					
BOTANICAL NAME	COMMON NAME	EXPECTED MAURE HEIGHT (mm)	EXPECTED MATURE WIDTH (mm)	POT SIZE	QUANTITY
<i>Corymbia ficifolia</i>	Red Flowering Gum	6000	4000	Pot Size : 45L	1
<i>Eucalyptus pulverulenta 'Baby Blue'</i>	Florist Silver Dollar	3700	3000	Pot Size : 300mm	3
<i>Melaleuca linariifolia</i>	Snow-in-summer	6000	4000	Pot Size : 200L	2

6

PLANTING SCHEDULE - SHRUBS & SPECIMEN PLANTS					
BOTANICAL NAME	COMMON NAME	EXPECTED MAURE HEIGHT (mm)	EXPECTED MAURE WIDTH (mm)	POT SIZE	QUANTITY
<i>Callistemon anzac white</i>	Callistemon citrinus 'White Anzac'	2000	1300	- : 200mm	6
<i>Eremophila Beryls Blue</i>	Emu bush beryls blue	1000	1000	- : 200mm	3
<i>Eremophila hybrid</i>	Eremophila 'Pink Pantha'	2000	1300	- : 200mm	9
<i>Eremophila nivea</i>	Eremophila 'Beryl's Blue'	2000	1000	- : 200mm	20
<i>Grevillea brachystachya</i>	Grevillea 'Frosty pink'	1500	1200	- : 200mm	18
<i>Grevillea juniperina</i>	Grevillea 'John Evans'	1500	1200	- : 200mm	20
<i>Grevillea whiteana x banksii 'moonlight'</i>	Grevillea 'Moonlight'	1500	1200	- : 200mm	5
<i>Grevillea 'Dorothy Gordon'</i>	Dorothy Gordon Grevillea	3000	2000	- : 200mm	5
<i>Leptospermum 'Pink Cascade'</i>	Tea Tree 'Pink Cascade'	800	1000	- : 200mm	2
<i>Themeda Triandra</i>	Kangaroo grass	1200	600	- : 150mm	6
<i>Westringia hybrid 'WES08' PBR</i>	Ozbreed Aussie box	1000	1000	- : 200mm	57
<i>Xanthorrhoea australis</i>	Austral grasstree	2500	1500	- : 200mm	3

154

NOTE : Species selected have been largely utilized from 'Australian plants for the North West Slopes' by Australian Plant Society, recommended in the Abel Ecological Report. The Australian Plant Society report notes that cultivars of species are suitable and these have been utilised in the design along with a small number of additional suitable species have been incorporated for their landscape value and to provide year-round flowering.

Trees



Corymbia ficifolia



Eucalyptus pulverulenta



Melaleuca linariifolia

Shrubs & Specimen Plant



Callistemon anzac white



Eremophila Beryls Blue



Eremophila hybrid



Grevillea brachystachya



Grevillea juniperina



Grevillea whiteana x banksii



Leptospermum 'Pink Cascade'



Themeda Triandra



Westringia hybrid 'WES08' PBR



Eremophila nivea



Grevillea 'Dorothy Gordon'



Xanthorrhoea australis

Planting

Planting Palette

PLANTING SCHEDULE - CLIMBERS, GRASSES, GROUNDCOVERS & SMALL SHRUBS					
BOTANICAL NAME	COMMON NAME	EXPECTED MATURE HEIGHT (mm)	POT SIZE	SPACING (mm)	QUANTITY
<i>Banksia 'Birthday Candles'</i>	Banksia 'Birthday Candles'	500	300mm	500	24
<i>Casurina glauca 'Cousin It'</i>	Swamp She-oak	300	300mm	400	4
<i>Correa alba</i>	White correa	1000	200mm	850	15
<i>Correa 'Dusty bells'</i>	Dusty bells	1000	200mm	950	2
<i>Dianella caerulea 'DCMP01' PBR</i>	Little Jess	400	150mm	350	56
<i>Dianella 'Silver Streak'</i>	Silver Streak Flax Lily	400	300mm	350	81
<i>Eremophila hybrid 'Red Desert'</i>	Eremophila 'Red Desert'	300	150mm	600	17
<i>Grevillea 'Winter Delight'</i>	Winter Delight	400	150mm	450	20
<i>Hardenbergia violacea 'Mini Ha Ha'</i>	Mini Ha ha	300	150mm	600	12
<i>Leptospermum 'Pink Cascade'</i>	Tea Tree 'Pink Cascade'	800	200mm	550	13
<i>Maireana oppositifolia 'Smokey'</i>	Healthy bluebush 'Smokey'	1000	150mm	750	12
<i>Melaleuca linariifolia 'Snowflake'</i>	Melaleuca 'Snowflake'	1200	150mm	1200	1
<i>Myoporum parvifolium</i>	Creeping Boobialla	350	150mm	450	15
<i>Pandorea pandorana</i>	Wonga Wonga Vine	950	200mm	600	22
<i>Pycnosorus globosus</i>	Billy Buttons	750	300mm	300	29
<i>Tetratheca thymifolia</i>	Black-eyed Susan	750	500mm	600	10
<i>Westringia hybrid 'WES08' PBR</i>	Ozbreed Aussie Box	900	200mm	550	51

384

Climbers, Grasses, Gourndcovers & Small Shrubs



Banksia 'Birthday Candles'



Casurina glauca 'Cousin It'



Correa alba



Correa 'Dusty bells'



Dianella caerulea 'DCMP01' PBR



Dianella 'Silver Streak'



Eremophila hybrid 'Red Desert'



Grevillea 'Winter Delight'



Hardenbergia violacea 'Mini Ha Ha'



Maireana oppositifolia 'Smokey'



Melaleuca linariifolia 'Snowflake'



Myoporum parvifolium



Pandorea pandorana



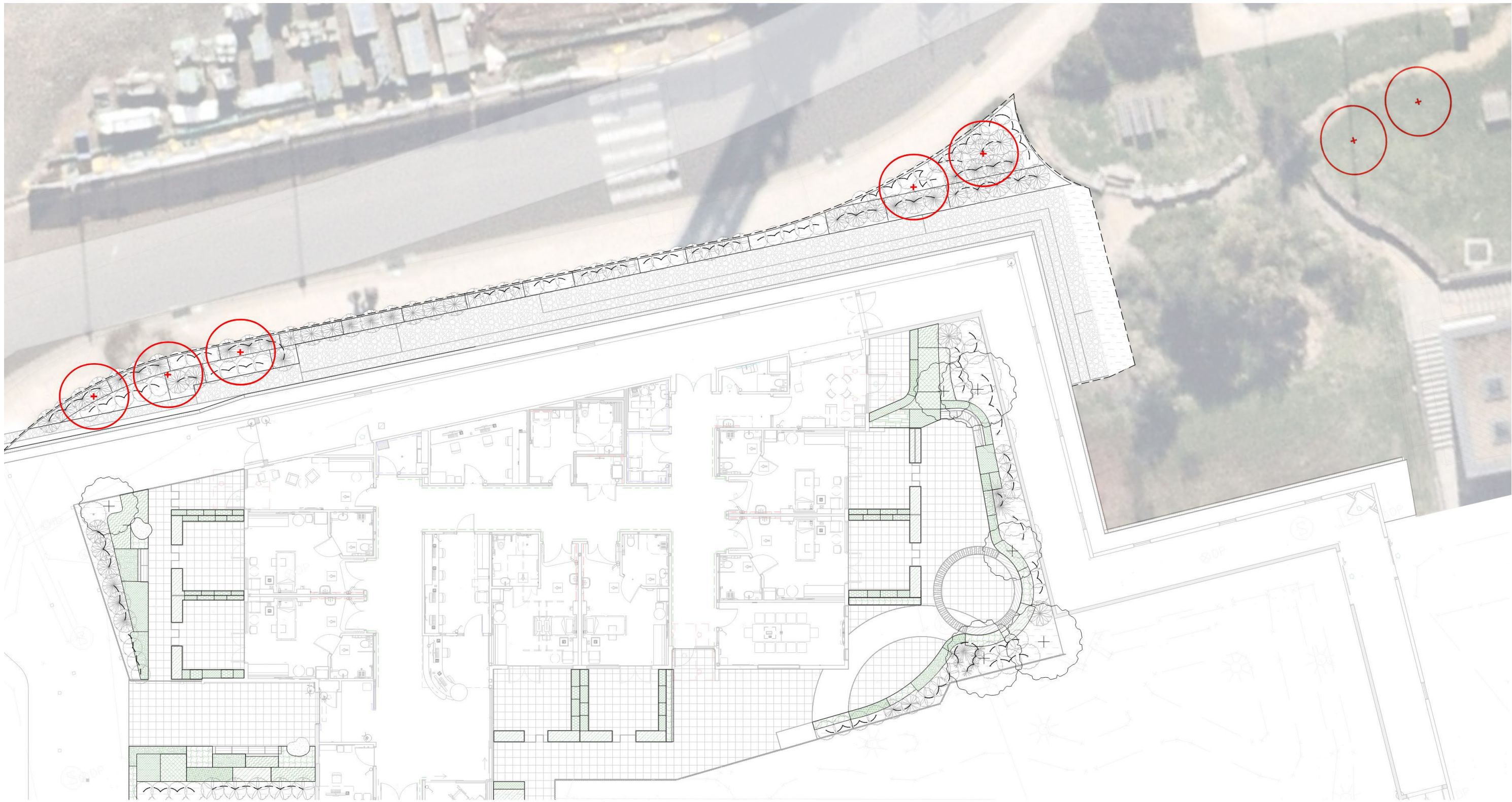
Pycnosorus globosus



Tetratheca thymifolia

Planting

Proposed Location Of Additional Trees



PLANTING SCHEDULE - ADDITIONAL TREES				
BOTANICAL NAME	COMMON NAME	EXPECTED MAURE HEIGHT (mm)	EXPECTED MATURE WIDTH (mm)	QUANTITY
<i>Eucalyptus leucoxylon</i> 'Euky Dwarf'	Dwarf Yellow Gum	5000	3000	7

LANDSCAPE DESIGN STATEMENT

5

Landscape Design Statement

The landscape design for the WCEoLP facility at Tamworth end-of-life is envisioned as a peaceful and welcoming space, using nature to create a private, calming environment for patients, visitors and staff. The design is deeply connected to the local context and Country through First Nations engagement and consultation on the spatial characteristics, materials and planting. The proposed works require the removal of 12 semi mature trees identified to be in good condition. The project will replace 6 trees within the courtyard spaces associated with the projects and 7 trees will be planted within close vicinity as shown in the proposed plan of additional trees.

Native plants are utilised, creating a sense of connection to the local character, Country and First Nations culture. Planting is designed to provide life and colour in the outdoor spaces with plants flowering throughout the seasons and selected to attract small birds and butterflies. The plant selections also reflect local cultural practices and provide species for cultural use.

The spatial arrangement provides for a variety of uses and types of use from private nooks to social gathering space with consideration of varying cultural needs.

Private patios off every patient room face into their own patio with privacy and a garden outlook. These gardens use built and planted screens for privacy and allow for movable furniture including patient beds to be utilised outdoors.

The communal areas allow for gathering of groups of various scales, with a BBQ facility providing amenity. The circular seating space is a focal point for gathering and reflection within the garden. All areas are fully accessible for people with limited mobility and in wheel chairs.

The refined design retains the principals of the earlier concepts prepared by Context Landscape Design in response to the relevant design guidance as follows.

Better Placed Design Guide

The refined design retains the principals of the earlier concepts prepared by Context Landscape Design which adopted the better places principles through:

- Contextual, local and of its place: Connecting with the local context of the New England region through plant species and material being driven by the local geology and ecotones of Tamworth.
- Equitable, inclusive and diverse: There are multiple outdoor spaces that have different functions including a spiritual space, intimate spaces for self-reflections, outdoor gathering and for the staff to retreat in their breaks. All the outdoor spaces have been designed for equitable and inclusive access allowing for patient's beds to be moved through all areas and interact with these spaces.
- Enjoyable, safe and comfortable: The outdoor spaces have been immersed in landscape with proposed trees providing shade and much needed human comfort to the spaces.

- Functional, responsive and fit for purpose: The outdoor spaces have been programmed in a manner that allows patients who are able-bodied, assisted walking or in a bed to be able to access the different programmed landscapes.
- Distinctive, visually interesting and appealing: Plant species and material have been based on ecotones and ecologies from the areas which provide a unique and interesting visual character to the spaces.

Draft Greener Places Design Guide

The aim of Greener Places is to create healthier and more livable cities and towns by improving open space recreation and urban canopy coverage. The design has been driven by the Greener Places Guidelines, with canopy coverage being a key driver for the outdoor spaces ensuring that canopy trees have been co-located with outdoor spaces to increase human comfort.

The selection of species has been considered to respond to the scale of the courtyards, to meet the bushfire requirements and relate to the contextual and cultural aspects of the place.

Design Guide for Health

The landscape design has been developed on the fundamental design principles of the NSW health design guidelines, the landscape has been designed with dignity with the landscape being welcoming, creating an environment for people to feel safe, cared for and supported during stressful times. The outdoor programming has focused on designing for wellbeing with all patients, visitors and staff having access to greenery and garden areas of different scales with both visual and physical connections.

Connecting with Country

A design with country dialogue was been opened by Context Landscape Design, with indigenous user groups and has been ongoing in the transition to the design development by Architectus.

The feedback of Elders and stakeholders has been integrated including the provision of plant species and spaces, the reason or purpose of which is, in some cases not shared due to cultural protocol. The Connection with Country process is ongoing and will continue to inform the refinement of the design.

The existing onsite, the existing Indigenous Garden which will be partially disturbed by the proposed expansion of the palliative care facility is to be reinstated in a new location on the hospital campus. This will be developed in close consultation with indigenous user groups and Elders.

CPTED Principles

The landscape design has considered the principals of CPTED with clear and intuitive wayfinding, visually prominent entrances and planting designed to allow sight lines for passive surveillance by hospital staff to monitor patients in the outdoor spaces.

Architectus Conrad Gargett
is a registered Business Name of Architec-
tus Australia Pty Ltd.
ABN 90 131 245 684

Nominated Architect
CEO
Ray Brown
NSWARB 6359

architectus™

Kaurna Country
Adelaide
Level 1, 15 Leigh Street
Adelaide SA 5000
Australia
T +61 8 8427 7300
adelaide@architectus.com.au

Turrbul and Jagera/Yuggera Country
Brisbane
Level 2, 79 Adelaide Street
Brisbane QLD 4000
Australia
T +61 7 3221 6077
brisbane@architectus.com.au

Yugambah and Bundjalung Country
Gold Coast
Level 1, 37 Connor Street
Burleigh Heads, QLD 4220
Australia
T+61 7 56193531
mail@conradgargett.com.au

Wurundjeri Country
Melbourne
Level 25, 385 Bourke Street
Melbourne VIC 3000
Australia
T +61 3 9429 5733
melbourne@architectus.com.au

Whadjuk Noongar Country
Perth
QV1 Upper Plaza West
250 St. Georges Terrace
Perth WA 6000
Australia
T +61 8 9412 8355
perth@architectus.com.au

Gadigal Country
Sydney
Level 18, 25 Martin Place
Sydney NSW 2000
Australia
T +61 2 8252 8400
sydney@architectus.com.au

Bindal and Wulgurukaba Country
Townsville
Level 1, 45 Eyre Street
North Ward QLD 4810
Australia
T +61 7 4795 0200
mail@conradgargett.com.au

Tāmaki Makaurau
Auckland
Level 2, 3-13 Shortland Street
Auckland 1010
Aotearoa New Zealand
T +64 9 307 5970
auckland@architectus.co.nz

Ōtautahi
Christchurch
Level 1, 152 Oxford Terrace
Christchurch 8011
Aotearoa New Zealand
T +64 3 377 7086
christchurch@architectus.co.nz

Tauranga
Basestation
148 Durham Street
Tauranga 3110
Aotearoa New Zealand
T +64 22 195 5893
tauranga@architectus.co.nz

Te Whanganui-a-Tara
Wellington
30 Waring Taylor Street
Wellington 6011
Aotearoa New Zealand
T +64 27 415 0022
wellington@architectus.co.nz